

Option 2 – DCP 172 Draft Legal Text

Schedule 22 Clause 1.24 – Amend the table as follows:

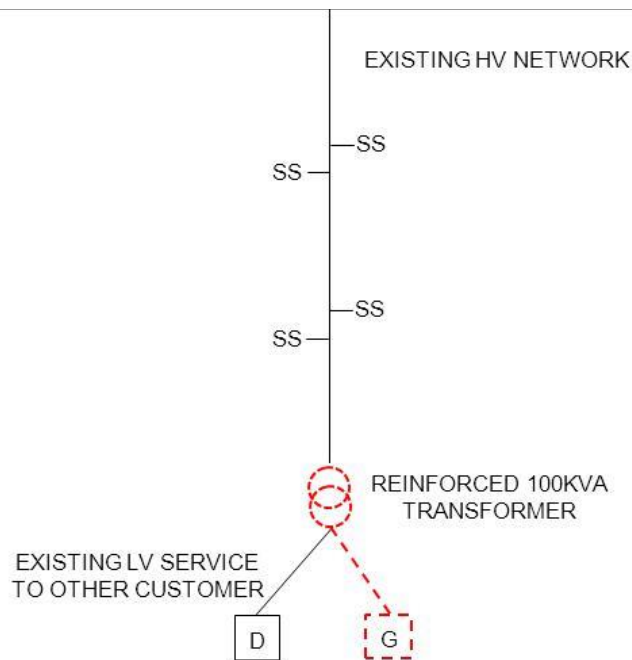
New Network Capacity	<p>is either the secure or non-secure capacity of the Relevant Section of Network (RSN) following Reinforcement. Whether secure or non-secure capacity is applicable depends upon the type of capacity that can be provided from the RSN. For example, if the capacity provided to the Customer by the RSN is secure, but the capacity requested by the Customer at the point of connection is non-secure, the secure capacity will be used. See Example 12.</p> <p>The capacity to be used will be based on our assessment of the thermal ratings, voltage changed^{top} and upstream restrictions and compliance with our relevant design, planning and security of supply policies. The equipment ratings to be used are the appropriate operational rating at the time of the most onerous operational conditions taking account of seasonal ratings and demand.</p>
-----------------------------	---

Option 2 – DCP 172 Draft Legal Text

Insert New Example X: New 25kVA Generation Connection, Voltage Rise Triggered Reinforcement

An existing Customer wishes to connect a new generator with a Required Capacity of 25kVA. The connection of the generator will require the local 25kVA pole mounted transformer to be reinforced with a 100kVA split phase transformer in order to keep voltage rise within acceptable limits. A new 95mm service cable is to be installed to the premises.

The Minimum Scheme is to provide a new service cable and to replace the 25kVA transformer at the local substation with a 100kVA transformer.



Reinforcement:

The RSN for the Reinforcement is the HV/LV transformer.

Security CAF calculation: the numerator in the CAF calculation is based upon the Required Capacity of the Customer, i.e. 25kVA. The denominator is based on the New Network Capacity following Reinforcement, this being the thermal capacity of the transformer i.e. 100kVA in this case.

Option 2 – DCP 172 Draft Legal Text

Fault Level CAF calculation: This scheme does not have any significant Fault Level contribution to the existing shared use distribution network and Fault Level CAF is therefore not applicable here.

The Connection Charge for this Scheme is calculated as follows:

Reinforcement:

	Cost	Apportionment	Customer Contribution
Non Contestable Work			
Replacement 100kVA transformer	£15,000	25/ 100 x 100% = 25%	£3,750
Total Reinforcement Cost	£15,000		£3,750

Extension Assets:

	Cost	Apportionment	Customer Contribution
Contestable Work			
Provision and installation of LV service cable	£1,500	n/a	£1,500
Non-Contestable Work			
LV joints to network	£500	n/a	£500
Total Extension Asset Cost	£2,000		£2,000
CIC Charges			£200

Total Connection Charge = £3,750 + £2,000 = £5,750

Option 2 – DCP 172 Draft Legal Text

(Note – for clarity the generation £200/kW rule has been ignored in this example but would apply in respect of the costs illustrated. Refer paragraph 1.15.)

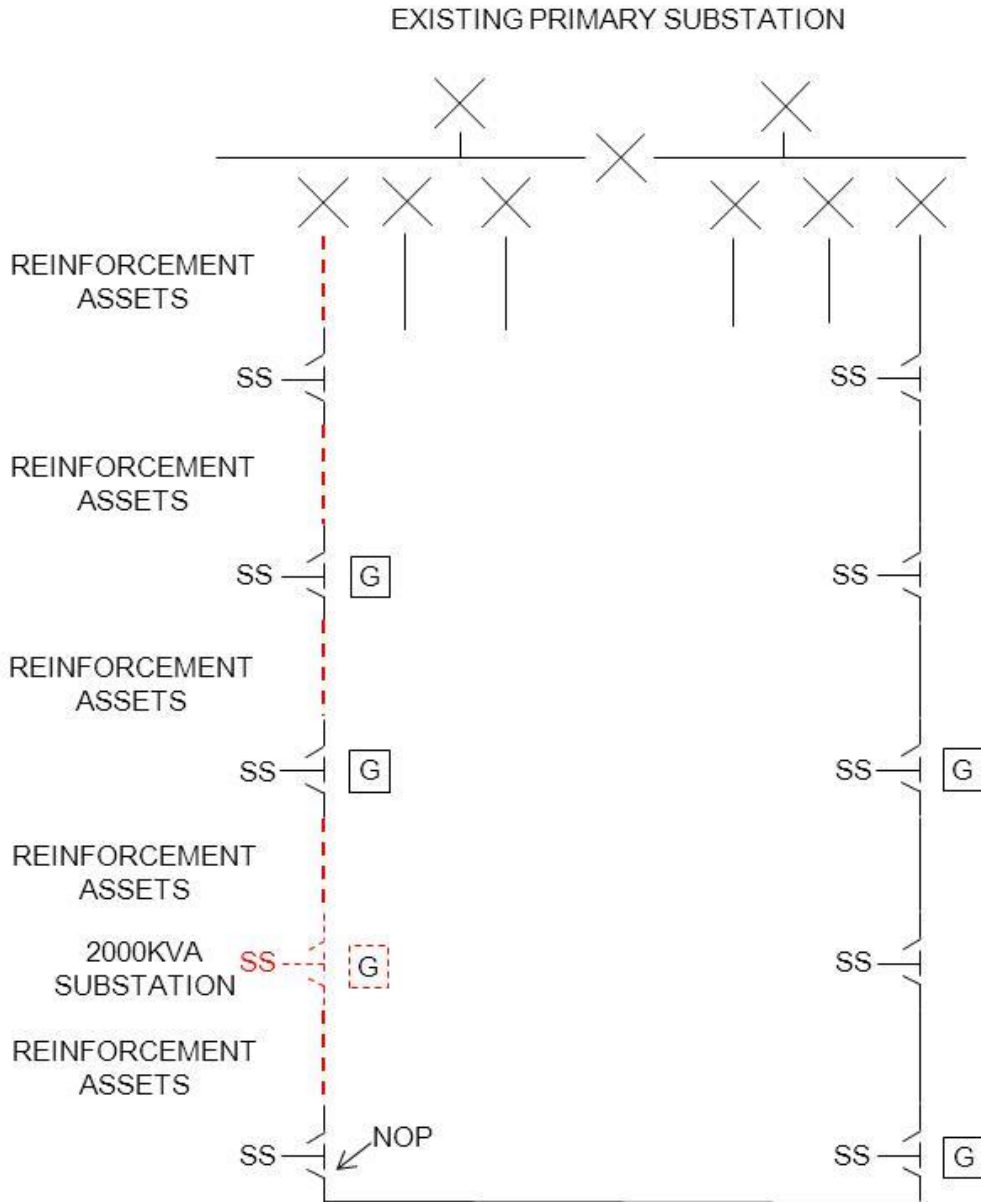
Option 2 – DCP 172 Draft Legal Text

Insert New Example Y: New 2MVA Generation Connection, Voltage Rise Triggered Reinforcement

A Customer wishes to connect a new generator with a Required Capacity for export purposes of 2MVA. The local 11kV feeder has a large amount of generation already connected and will need to be reinforced in order to keep voltage rise within acceptable limits. It is proposed to reinforce the existing 185mm 11kV underground cable with 300mm underground cable and install a new substation for connection of the 2MVA export capacity. The total length of the reinforced cable is 2km. The thermal rating of the 300mm underground cable is 8MVA. The 11kV underground cable on the other side of the normal open point is already 300mm and does not require to be reinforced.

The Minimum Scheme is to provide a new substation and to replace the 185mm 11kV cable with a 300mm cable.

Option 2 – DCP 172 Draft Legal Text



Reinforcement:

The RSN for the Reinforcement is the 11kV feeder.

Security CAF calculation: the numerator in the CAF calculation is based upon the Required Capacity of the Customer, i.e. 2MVA. The denominator is based on the New Network Capacity following Reinforcement, this being the secure capacity of the network after reinforcement i.e. 8MVA in this case.

Option 2 – DCP 172 Draft Legal Text

Fault Level CAF calculation: This scheme does not have any significant Fault Level contribution to the existing shared use distribution network and Fault Level CAF is therefore not applicable here.

The Connection Charge for this Scheme is calculated as follows:

Reinforcement:

	Cost	Apportionment	Customer Contribution
Non Contestable Work			
2km 300mm 11kV cable	£200,000	2/8 x 100% = 25%	£50,000
Total Reinforcement Cost	£200,000		£50,000

Extension Assets:

	Cost	Apportionment	Customer Contribution
Contestable Work			
2MVA 11kV substation	£40,000	n/a	£40,000
Non-Contestable Work			
2 by 11kV closing joints	£5,000	n/a	£5,000
Total Extension Asset Cost	£45,000		£45,000
CIC Charges			£200

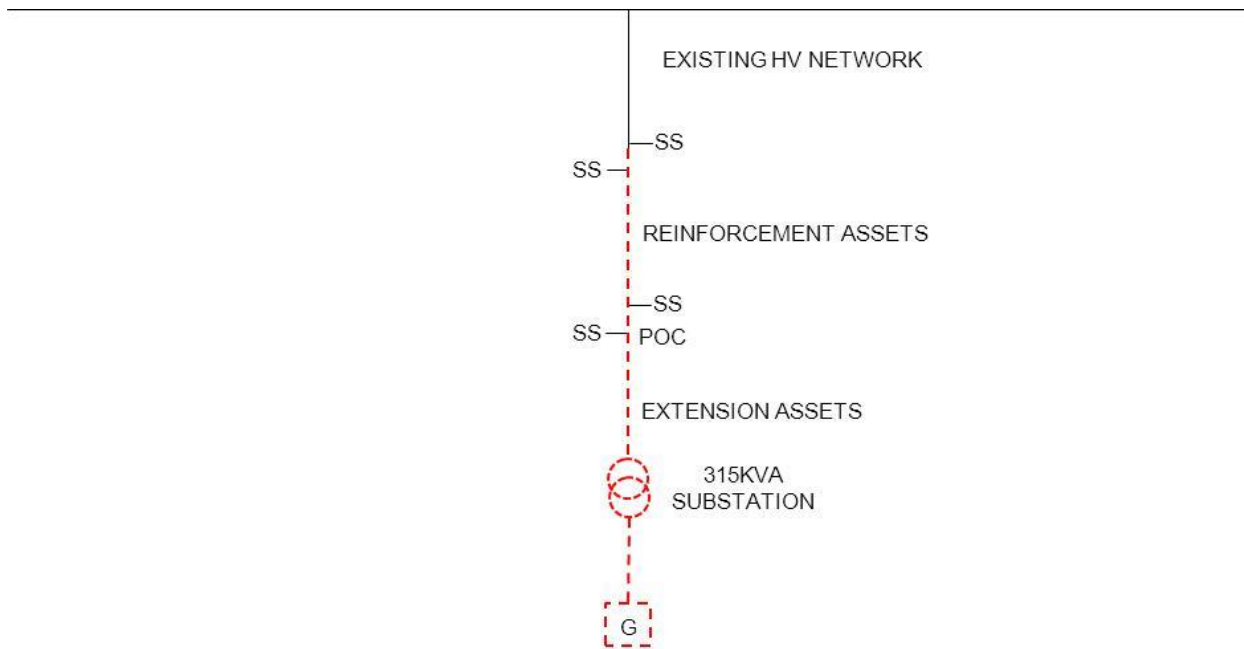
Total Connection Charge = £50,000 + £45,000 = £95,000

Option 2 – DCP 172 Draft Legal Text

Insert New Example Z: New 250kVA Generation Connection, Voltage Rise Triggered Reinforcement

A Customer wishes to connect a new generator with a Required Capacity of 250kVA. The connection of the generator will require the local 11kV overhead line to be reinforced with 100mm conductor over part of its length in order to keep voltage rise within acceptable limits. The thermal capacity of the 100mm overhead line is 5MVA. The thermal capacity of the original 50mm overhead line is 3MVA. A new 315kVA ground mounted substation is to be installed at the premises. The overhead line is 1km in length but only 500m is required to be reinforced in order to keep voltage rise within acceptable limits.

The Minimum Scheme is to provide a new ground mounted substation and to replace part of the existing overhead line with 100mm conductor.



Reinforcement:

The RSN for the Reinforcement is the 11kV overhead line.

Option 2 – DCP 172 Draft Legal Text

Security CAF calculation: the numerator in the CAF calculation is based upon the Required Capacity of the Customer, i.e. 250kVA. The denominator is based on the New Network Capacity following Reinforcement, this being 1MVA in consideration of the security of supply limitation for a network spur/teed connection..

Fault Level CAF calculation: This scheme does not have any significant Fault Level contribution to the existing shared use distribution network and Fault Level CAF is therefore not applicable here.

The Connection Charge for this Scheme is calculated as follows:

Reinforcement:

	Cost	Apportionment	Customer Contribution
Non Contestable Work			
Replacement 11kV overhead line conductor	£25,000	$250/1000 \times 100\% = 25\%$	£6,250
Total Reinforcement Cost	£25,000		£6,250

Extension Assets:

	Cost	Apportionment	Customer Contribution
Contestable Work			
Provision and installation of 315kVA substation	£50,000	n/a	£50,000
Non-Contestable Work			
11kV joint to network	£1,000	n/a	£1,000

Option 2 – DCP 172 Draft Legal Text

Total Extension Asset Cost	£51,000		£51,000
CIC Charges			£200

Total Connection Charge = £6,250 + £51,000 = £57,250